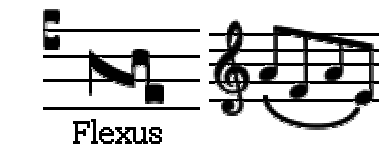
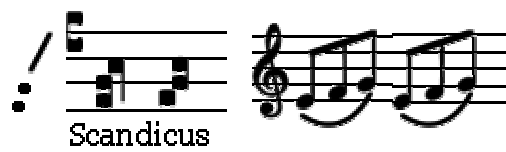
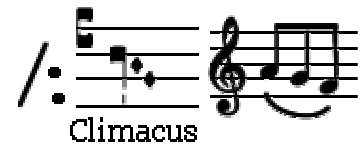
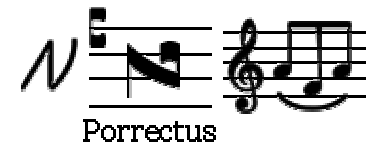
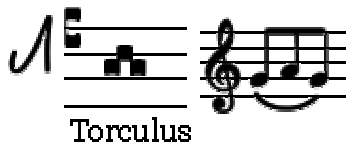
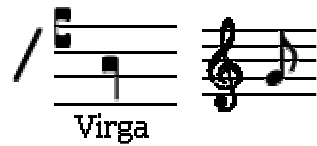
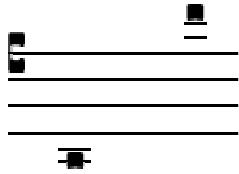
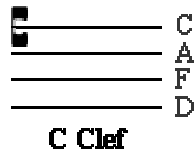
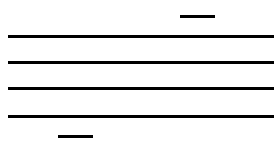


Gregoriánska notácia





Resupini



Praepunctis



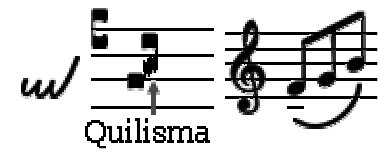
Subpunctis



Al-le lau-di por-tae lu-ia
Liquescente



Pressus



Quilisma



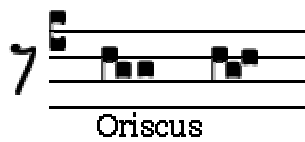
Apostropha



Distropha



Tristropha



Oriscus



Bivirga Trivirga



saé(e) (e) cu - lum

flo - re - bi (i) (i) t

al - le (e) (e) lú - ia

nome (e)(e) (e) n

a b c d

Ps. Exsul-tá-te Dé-o adju-tó-ri nóstro : * ju-bi-lá-te Dé-o

Já- cob. Gló-ri- a Pátri. E u o u a e.